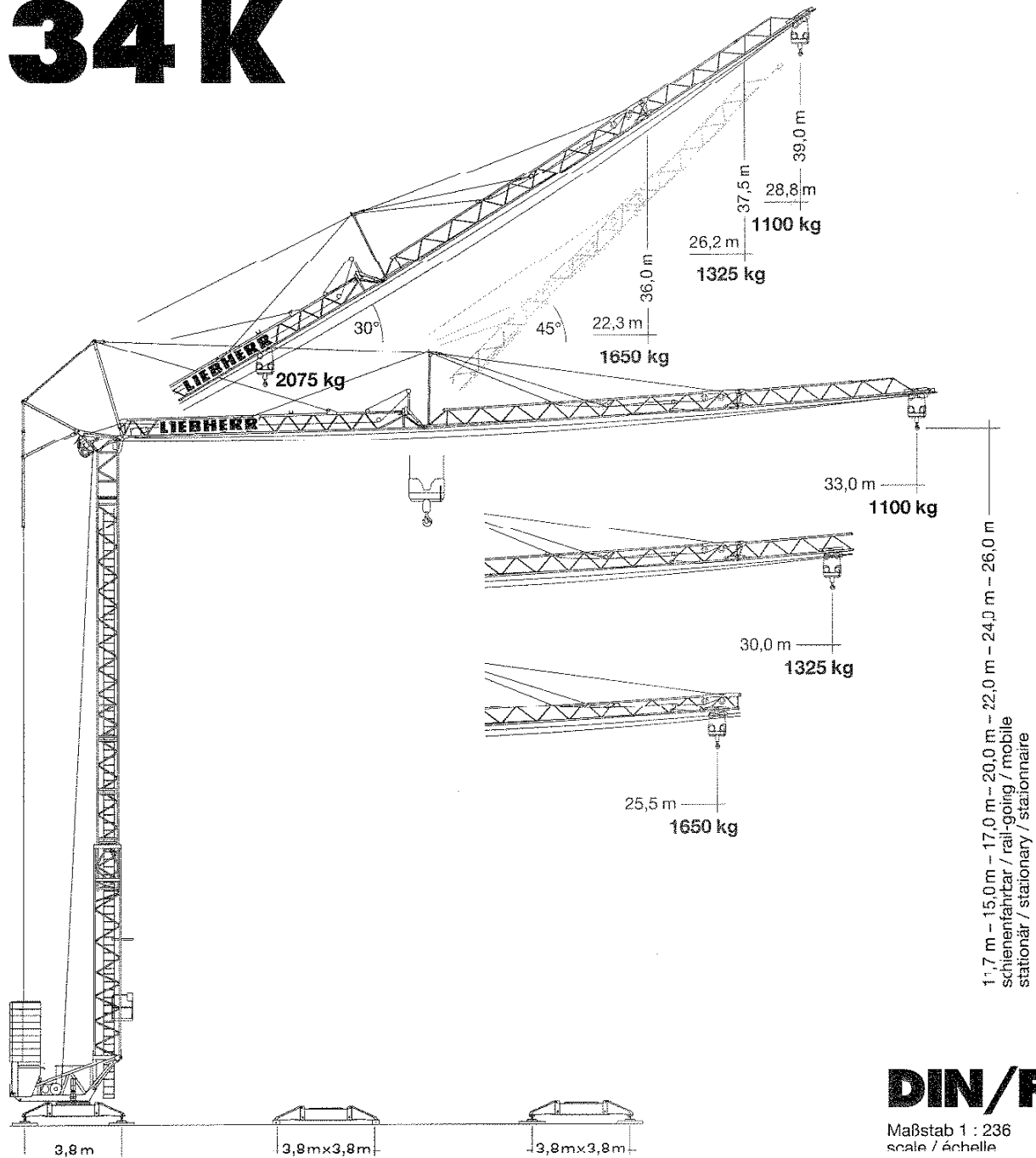
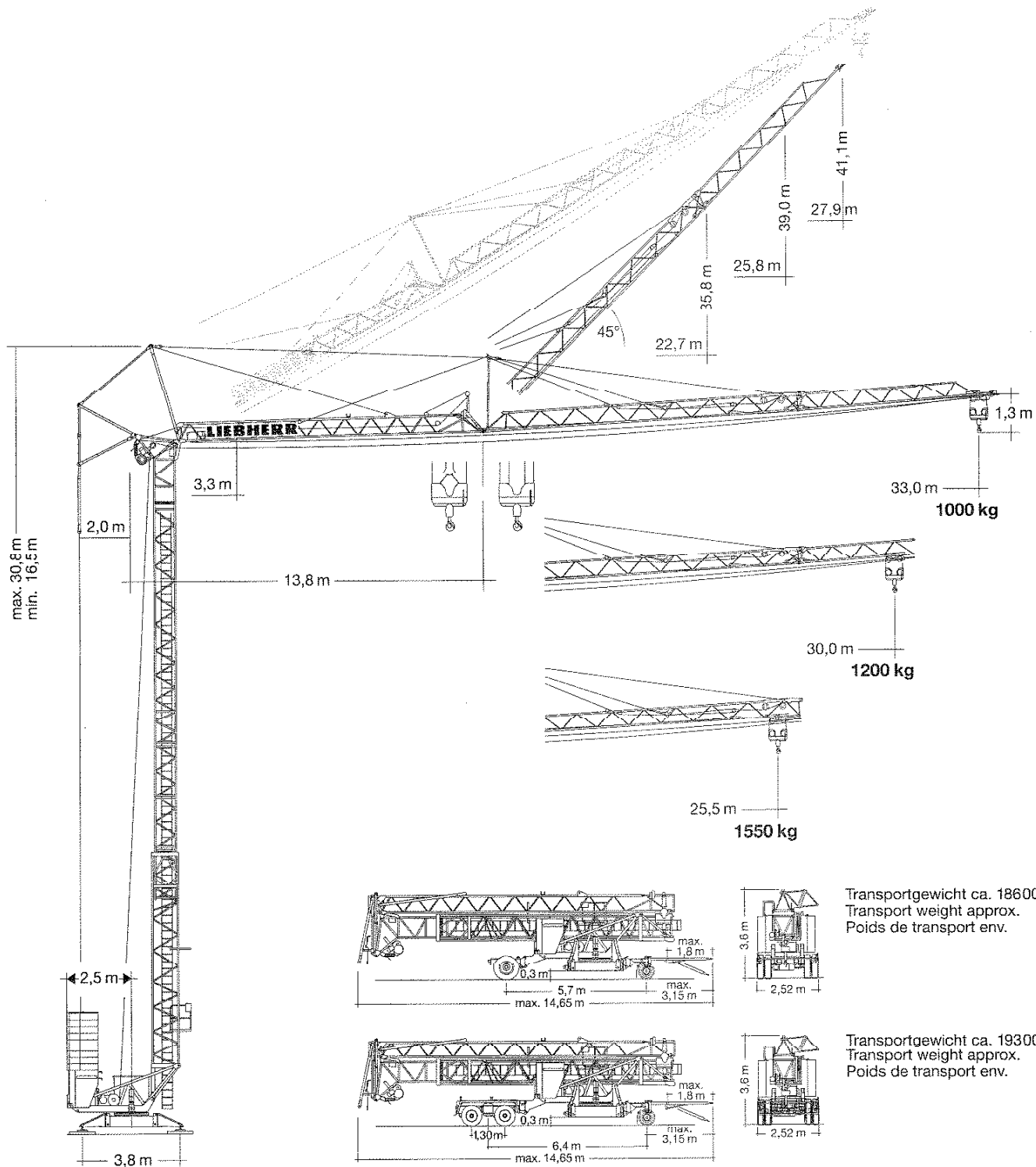


**Tower Crane  
Grue à tour**

# Turmdrehkran 34 K



# LIEBHERR



# Gewicht

## Weight Poids

Gegengewicht Counterweight Contrepoids	$r = 2,5 \text{ m}$	18980 kg	Konstruktionsgewicht ca. Dead weight approx. Poids de la construction env.	9700 kg (bei max. HH 26 m: + 1050 kg)
--	---------------------	----------	--	--

# 34K

# Ausladung und Tragfähigkeit

## Radius and capacity / Portée et charge

Auslegerlänge Length of jib Longueur de flèche m	max. kg m/kg	m/kg																							
		10,0	11,0	12,0	13,0	14,0	15,0	16,0	17,0	18,0	19,0	20,0	21,0	22,0	23,0	24,0	25,5	26,0	27,0	28,0	29,0	30,0	31,0	32,0	33,0
33,0	3,3 - 17,40 2075	2075	2075	2075	2075	2075	2075	2075	2075	1990	1870	1750	1650	1560	1480	1410	1310	1275	1220	1160	1120	1100	1100	1100	1100
30,0	3,3 - 18,40 2075	2075	2075	2075	2075	2075	2075	2075	2075	2075	2000	1880	1770	1675	1590	1510	1400	1370	1325	1325	1325	1325			
25,5	3,3 - 19,50 2075	2075	2075	2075	2075	2075	2075	2075	2075	2075	2075	2000	1890	1790	1700	1650	1650								
m	max. kg m/kg	m/kg																							
		10,0	11,0	12,0	13,0	14,0	15,0	16,0	17,0	18,0	19,0	20,0	21,0	22,0	23,0	24,0	25,5	26,0	27,0	28,0	29,0	30,0	31,0	32,0	33,0
33,0	3,3 - 17,03 2000	2000	2000	2000	2000	2000	2000	2000	2000	1870	1740	1630	1530	1450	1370	1290	1200	1170	1110	1060	1010	1000	1000	1000	1000
30,0	3,3 - 18,08 2000	2000	2000	2000	2000	2000	2000	2000	2000	2000	1880	1760	1660	1560	1480	1400	1300	1260	1200	1200	1200	1200	1200		
25,5	3,3 - 19,17 2000	2000	2000	2000	2000	2000	2000	2000	2000	2000	2000	1900	1790	1685	1590	1550	1550								
m	max. kg m/kg	m/kg																							
		10,0	11,0	12,0	13,0	14,0	15,0	16,0	17,0	18,0	19,0	20,0	21,0	22,0	23,0	24,0	25,5	26,0	27,0	28,0	29,0	30,0	31,0	32,0	33,0
33,0	3,3 - 19,14 4000	2000	2000	2000	2000	2000	2000	2000	2000	2000	2000	1780	1680	1590	1510	1400	1360	1300	1240	1180	1130	1090	1040	1000	
30,0	3,3 - 17,35 4000	2200	2200	2200	2200	2200	2200	2200	2200	2100	1960	1840	1730	1640	1550	1470	1360	1320	1260	1200	1150	1100			
25,5	3,3 - 14,55 4000	3100	3100	3100	3100	3100	2990	2760	2560	2390	2230	2100	1970	1860	1760	1670	1550								
m	max. kg m/kg	Auslegersteilstellung 30° / Elevated jib 30° / Flèche inclinée 30°																							
		17,0	18,0	19,0	20,0	21,0	22,3	23,0	24,0	25,0	26,2	27,0	28,0	28,8											
33,0	3,0 - 16,48 2075	2000	1850	1730	1620	1520	1400	1350	1280	1210	1140	1100	1100	1100											
30,0	3,0 - 17,15 2075	2075	1950	1820	1710	1600	1480	1430	1350	1330	1330														
25,5	3,0 - 17,76 2075	2075	2040	1910	1790	1680	1650																		

## Geschwindigkeiten

### Speeds / Vitesses

	U/min. sl./min tr./min 0 ↔ 0,9	2,2 kW, EDC
	20,0 / 40,0 m/min	1,3 / 2,3 kW
	25,0 m/min	2 x 1,3 kW
	0 - 45° ca. 30 sec.	2,2 kW

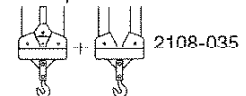
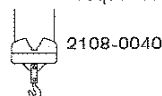
Hubwerk Hoist unit Mécanisme de levage	Stufe Step Cran	kg	m/min
11,0 kW	1	2075	6,0
	2	2075	25,0
	3	1000	50,0
11,0 kW	1	2000 4000	6,0 3,0
	2	2000 4000	25,0 12,5
	3	1000 2000	50,0 25,0
	4	2000 4000	3,0 1,5
11,0 kW (FU)	1	2000 4000	3,0 15,0
	2	2000 4000	30,0 15,0
	3	1500 3000	40,0 20,0
	4	1000 2000	55,0 27,5

Leitungsquerschnitt bei 400 V bis 63,0 m 4 x 10 mm<sup>2</sup> (KL) Betriebsspannung 400 V  
 Cross section of cable up to 4 x 6 mm<sup>2</sup> (FU) Operating voltage 400 V  
 Section de câble à jusqu'à 4 x 6 mm<sup>2</sup> (FU) Tension de service 400 V

Frequenz 50 Hz  
 Frequency 50 Hz  
 Fréquence 50 Hz

Anschlußwert 21,0 kVA (KL)  
 Power requirement 17,0 kVA (FU)  
 Puissance requise 21,0 kVA (KL)  
 17,0 kVA (FU)

Technische Kenngröße nach BGL  
 Technical nominal size according to the construction machinery list (BGL)  
 Grandeur caractéristique suivant le barème d'emploi des appareils (BGL)



# Technische Daten - Technical data

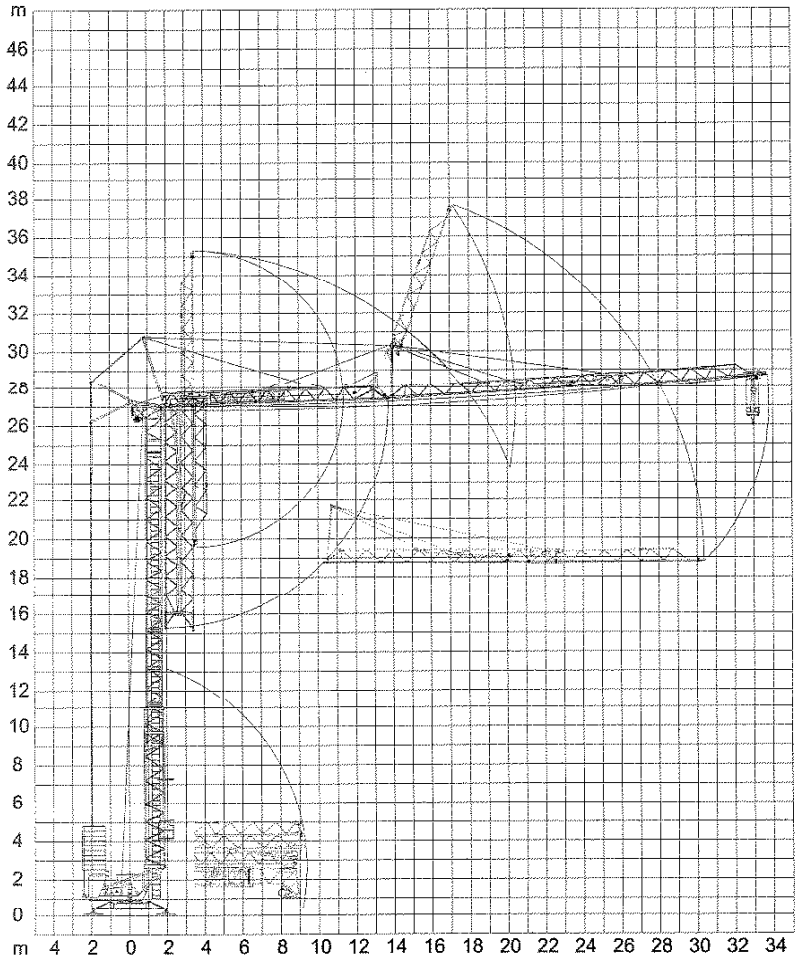
## Caractéristiques techniques

# Aufstellvorgang

Erection procedure

Déroulement de montage

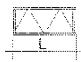

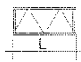

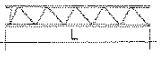
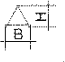
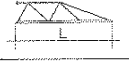


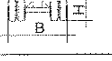




Ballasterausladung 5,0 m  
Ballasting radius 5,0 m  
Portée pour dispositif de lestage 5,0 m



## Kolli-Liste

Packing List

Liste de colisage

No. Item	Ans. Qty.	Turmstück Tower section Élément de mât			L (m)	B (m)	H (m)	kg
1	3	Turmstück Tower section Élément de mât			2,10	0,85	0,88	350
2	1	Ausleger-Verlängerung 25,5 m – 30,0 m Jib extension Rallonge de la flèche			4,70	0,80	0,70	180
3	1	Ausleger-Verlängerung 30,0 m – 33,0 m Jib extension Rallonge de la flèche			3,10	0,80	0,70	65
4	1	Transportachse vorne Tra 100 KY 2 Road transport axle front Essieux de transport avant			3,00	1,13	0,97	660
5	1	Transportachse hinten Tra 120 GY 1A Road transport axle behind Essieux de transport arrière			1,90	2,50	1,05	1150
6	1	Transportachse Tra 200 GZ 3 Road transport axle Essieux de transport			3,10	2,50	1,10	2600
7	1	Kiste mit Seilen und Kleinteilen Case with ropes and small parts Caisse avec câbles et pièces détachées			1,00	0,80	1,00	450

Datenblatt Nr. 120 P – 3861 H1 B3 DIN 15018 • BGL 2108-0040 /  
FEM (Section 1) Krangruppe A3 und OENORM T3 • 03.98

Data sheet  
Feuille de caractéristiques

Konstruktionsänderungen vorbehalten!  
Subject to alterations!  
Sous réserves de modifications!

Printed in Germany.

Nehmen Sie Kontakt auf mit  
Please contact

Mettez-vous en rapport avec

LIEBHERR-WERK BIBERACH GMBH, Postfach 1663, D-88396 Biberach an der Riß

☎ (073 51) 41-0, Fax (073 51) 4 12 25, <http://www.Liebherr.com>, E-Mail: [info@lbc.liebherr.com](mailto:info@lbc.liebherr.com)