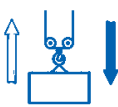





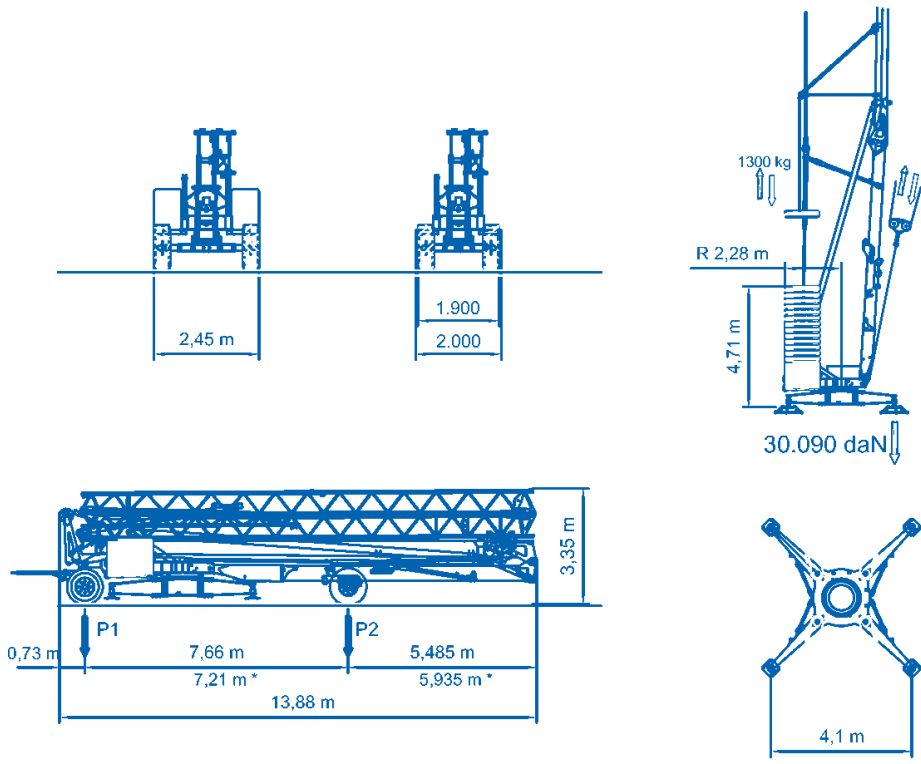


=	⋮	400V (±10%) 50 Hz		18kVA			
	m/l'	6,3	▶ 21	▶▶ 31	▶▶ 48		
	kg	4000	4000	1400	1400		
	kW	15 (Inverter)					
	m/l'	17.8	▶ 28.6	▶▶ 53.5 (↗39.3)			
	kW	3 (Inverter)					
	n/l'	0.17	▶ 0.42	▶▶ 0.85			
	kW	3,7 (Inverter)					
	min	▶ 12		15.190 kg			
		kW 3					5.200 kg + 16.900 kg
		5200 kg	2600 kg	0 kg			
P1		8750 kg 8020 kg *	6616 kg 5916 kg *	4483 kg 3811 kg *			
P2		11690 kg 12420 kg *	11224 kg 11924 kg *	10757 kg 11429 kg *			



Alle Abmessungen und technischen Daten sind unverbindlich.

EUROGRU[®]
BAUKRANE SEIT 1962

Am Dornbusch 10
64390 Erzhausen
www.eurogru.de

Telefon: +49 (0) 6150 13440
Fax: +49 (0) 6150 7002
Email: kontakt@eurogru.de